

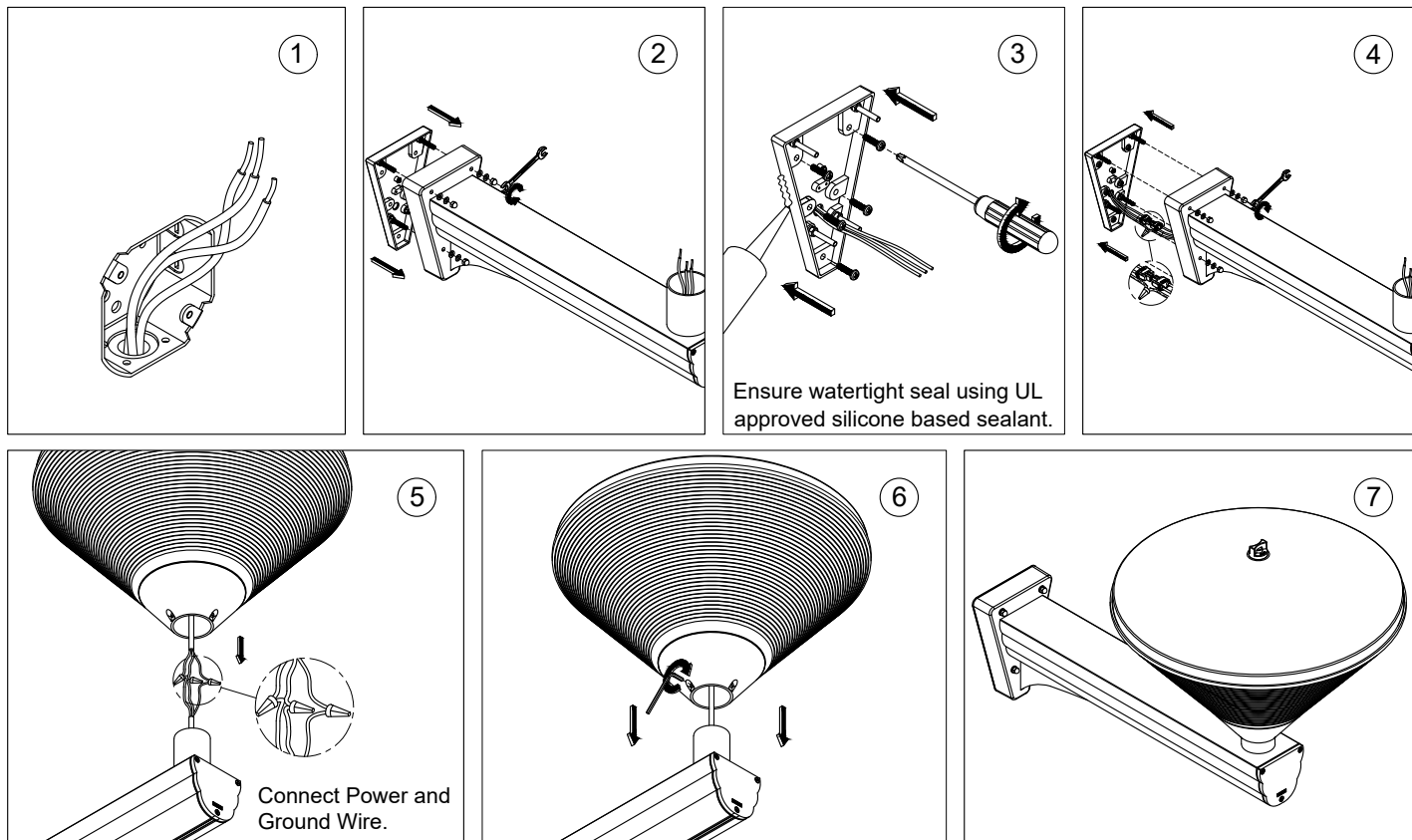
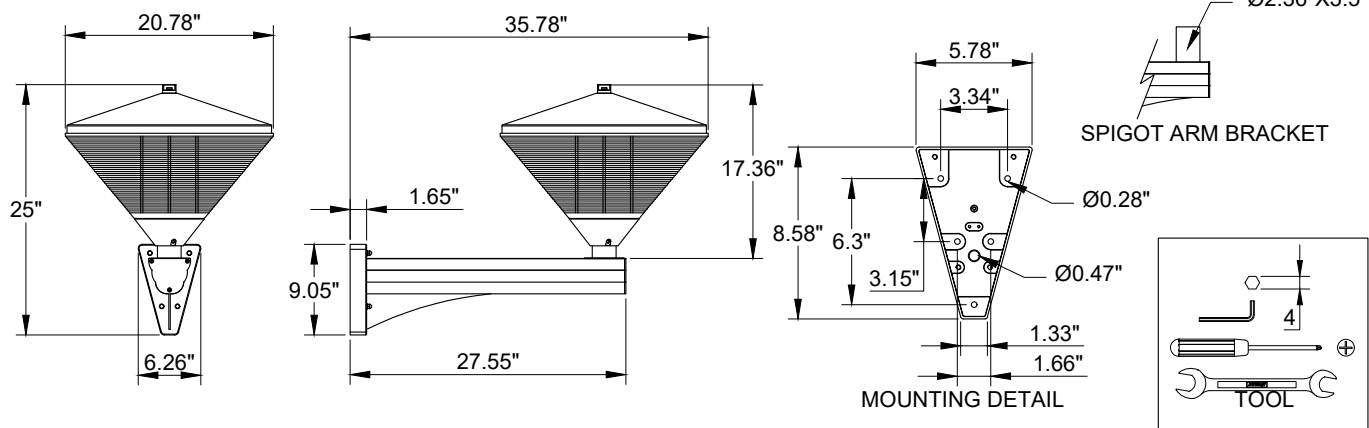
# INSTALLATION AND SERVICE MANUAL

**LIGMAN**  
LIGHTING USA

For Installation of Qba Wall Light LED.  
Model. UQB-31060.

## Product drawing (dimensions)

SUITABLE FOR WET LOCATIONS



## Notice to installer :

- 1.WIRING INSTRUCTIONS Warning : RISK OF FIRE AND ELECTRICAL SHOCK. : FIXTURE MUST BE INSTALLED BY A QUALIFIED ELECTRICIAN ONLY>FIXTURE IS INTENDED FOR INSTALLATION IN ACCORDANCE WITH THE NATIONAL ELECTRICAL CODE, LOCAL AND FEDERAL CODE SPECIFICATIONS. DISCONNECT POWER BEFORE SERVICING.**
- 2.This fixture has a VOLTAGE SPECIFIC BALLAST,Check that the supply voltage is the same as the installed ballast voltage.**

**Ligman Lighting USA**

7144 NE Progress Court, Hillsboro  
Oregon, 97124, USA  
Tel : 503 645 0500 | Fax : 503 645 8100

www.ligmanlightingusa.com

UQB-31060 08/04/24 REV\_1  
1/1

FM-TS-13-1/13-05-2563/Rev.6